

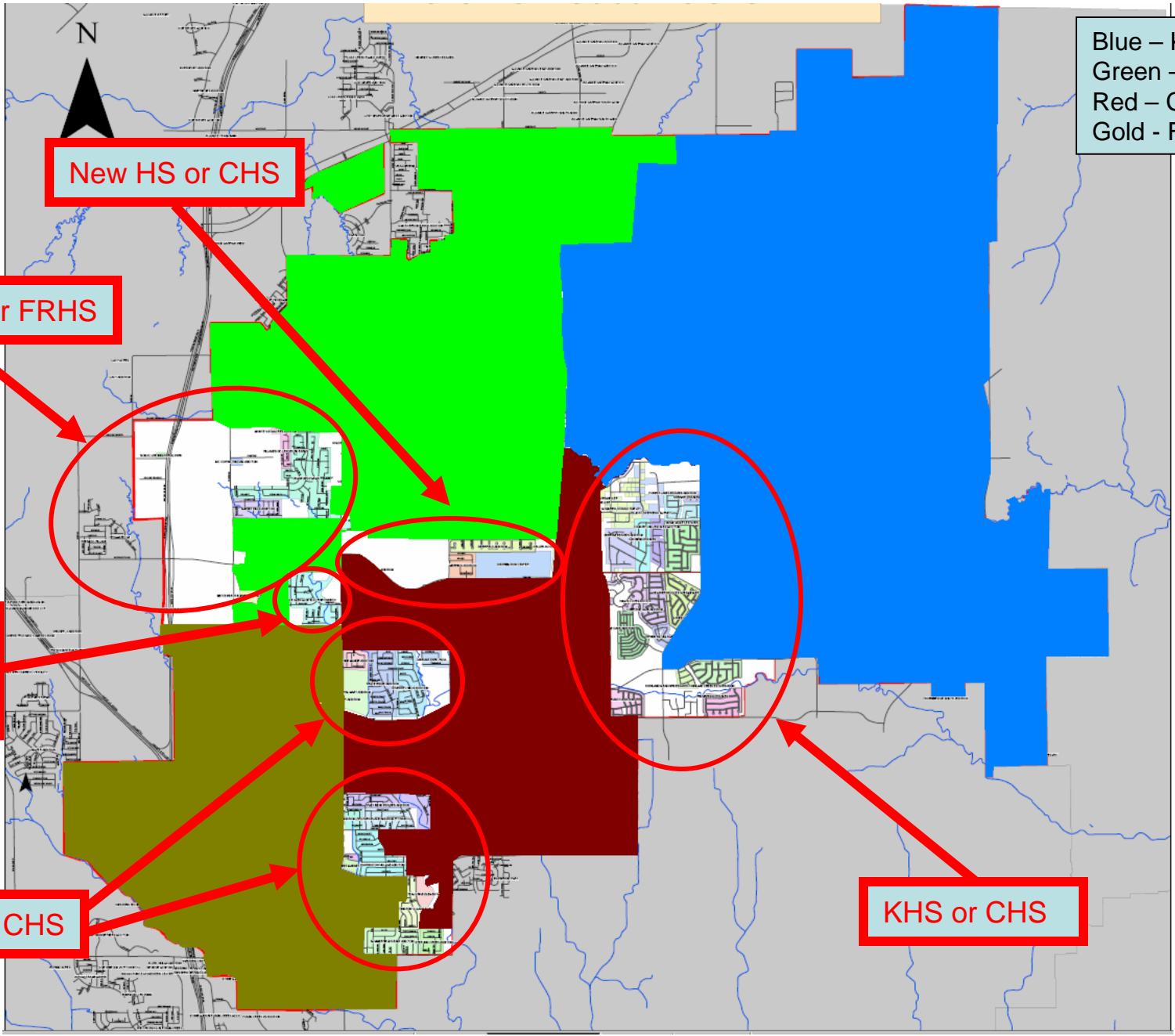
Park Glen Proposal

- Park Glen is currently split between Haltom High and Central High. Dividing the KISD portion of Park Glen into two schools (Central and Fossil Ridge) effectively divides the community amongst three schools.
- Park Glen has gone through the most boundary changes in KISD. For example, all of the current proposals not only split our community but have some of our ninth graders attending their eighth school once the new boundaries take effect. After having suffered through more than fifteen years growing pains in the Keller ISD, we feel we've earned the current boundaries and every attempt should be made to keep the KISD portion of our community together in Central High School.
- Proposal HS JB2 currently has Keller High as the least populated school in 2011. Since the population of Keller High is expected to decrease after 2011, there is no reason keep KHS comparatively small. Simply moving some communities east of 377 out of Central High and back in Keller High will allow for Park Glen to be united in Central. It also improves the safety aspect in that it reduces the number of students crossing 377 and the train tracks. Finally, it improves the possibility of future expansion in the high growth areas.

Proposal HS1A can also easily be modified to keep Park Glen together in Central by putting Stone Manor, Trace Ridge, and Coventry Hills (growing communities roughly equidistant from FRHS and CHS) into FRHS.

The Map on the following page is our proposal as to how we feel the boundaries should be chosen. The logical starting boundaries for all schools is shown, with the areas up for debate noted. The process is as follows:

1. Choose the final communities for Keller High. Perfect balance amongst the four schools in 2011 would imply 2763 students per school. Since the population of KHS is going to DECREASE after 2011 while the other three schools increase, it is recommended that the KHS population in 2011 be greater than the average. This reduces the number of students crossing 377 and the train tracks and allows for future expansion in the high growth areas.
2. Choose which of the remaining communities will go to which school based on BARC's criteria.



Blue - KHS
Green - New HS
Red - CHS
Gold - FRHS

New HS or CHS

New HS or FRHS

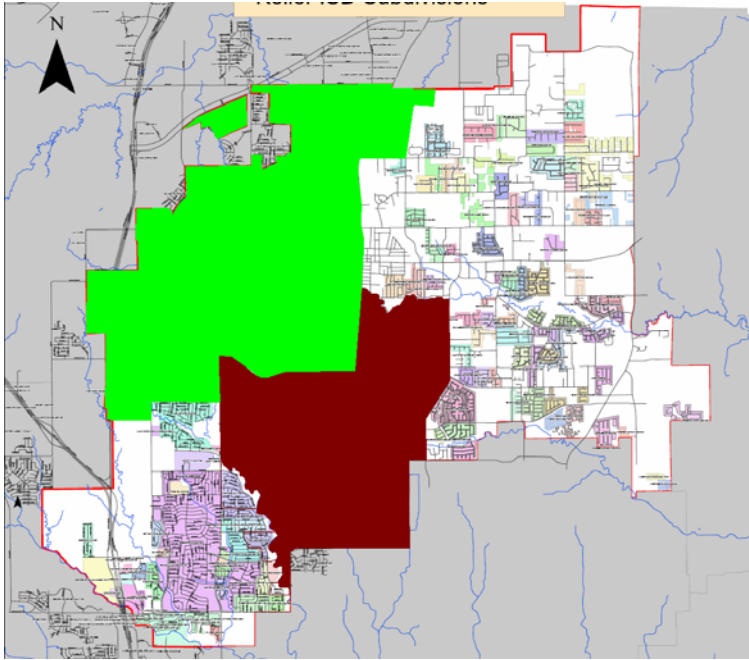
New HS,
FRHS,
or CHS

FRHS or CHS

KHS or CHS

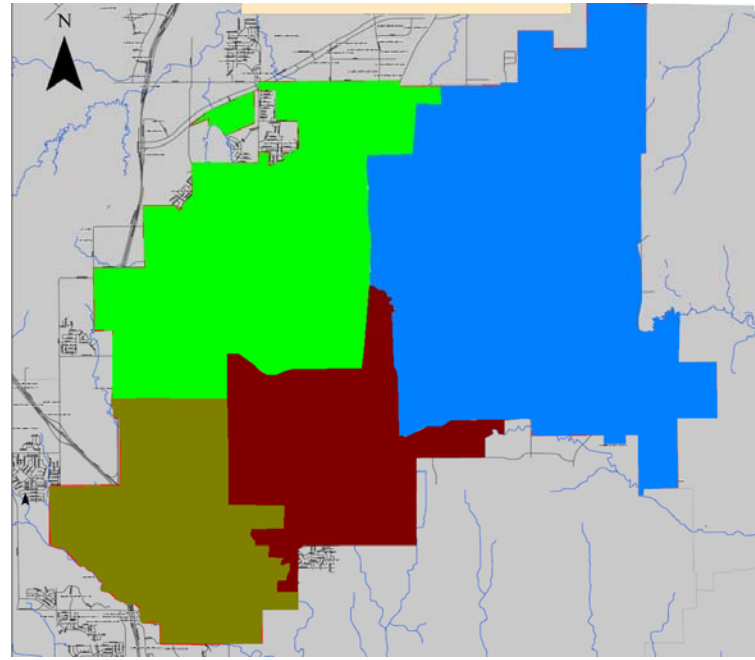
The following two slides are examples of how easily the current proposals can be modified to keep Park Glen united in Central High School. These are not necessarily the exact boundaries that we recommend.

NOTE: The KHS and FRHS school zones are not shaded in the “before” pictures so the streets and dividing lines can be better observed.



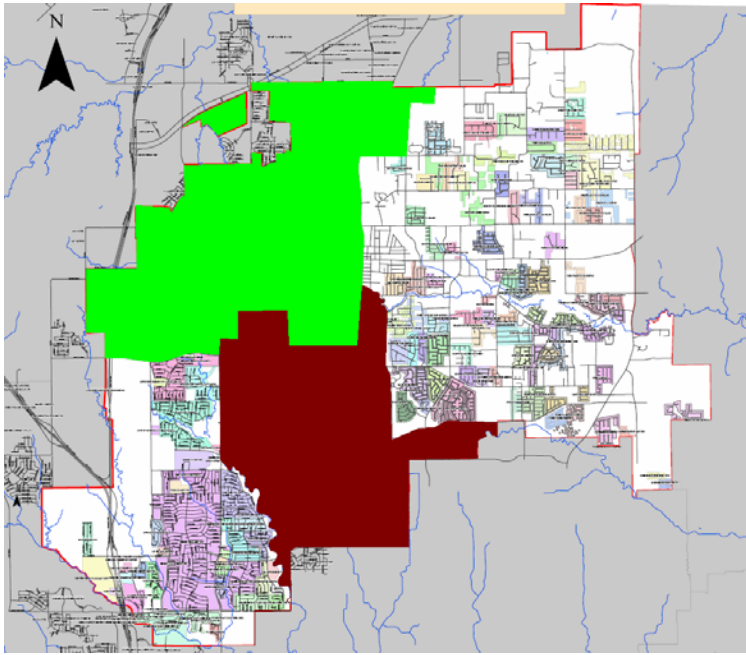
JB2

Park Glen split amongst 3 schools (2 in KISD)
 Large number of students crossing 377 & train tracks
 Good chance of future overcrowding in at least one HS
 Large number of students being re-zoned



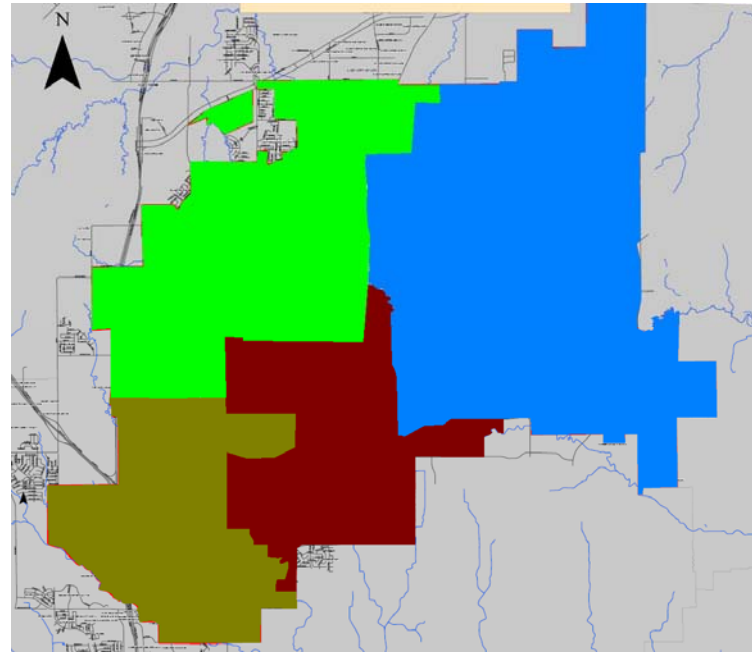
Modified JB2

Park Glen split amongst 2 schools (1 in KISD)
 Minimized number of students crossing 377 & train tracks
 Lower chance of future overcrowding
 Re-zoning directly impacts much fewer students



HS1A

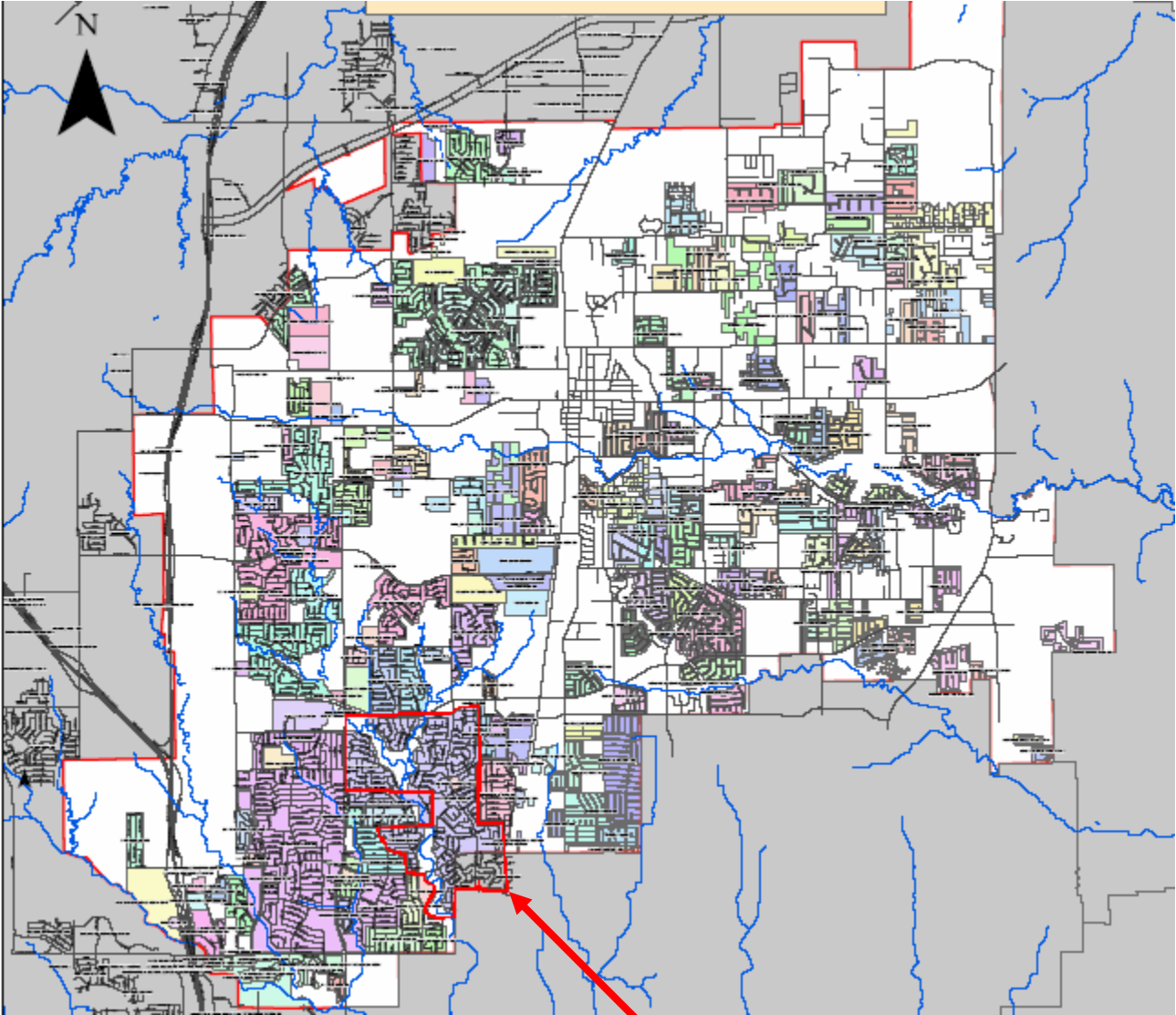
Park Glen split amongst 3 schools (2 in KISD)
Heritage split amongst 3 schools



Modified HS1A

Park Glen split amongst 2 schools (1 in KISD)
Heritage split amongst 2 schools

Park Glen Boundaries



Park Glen